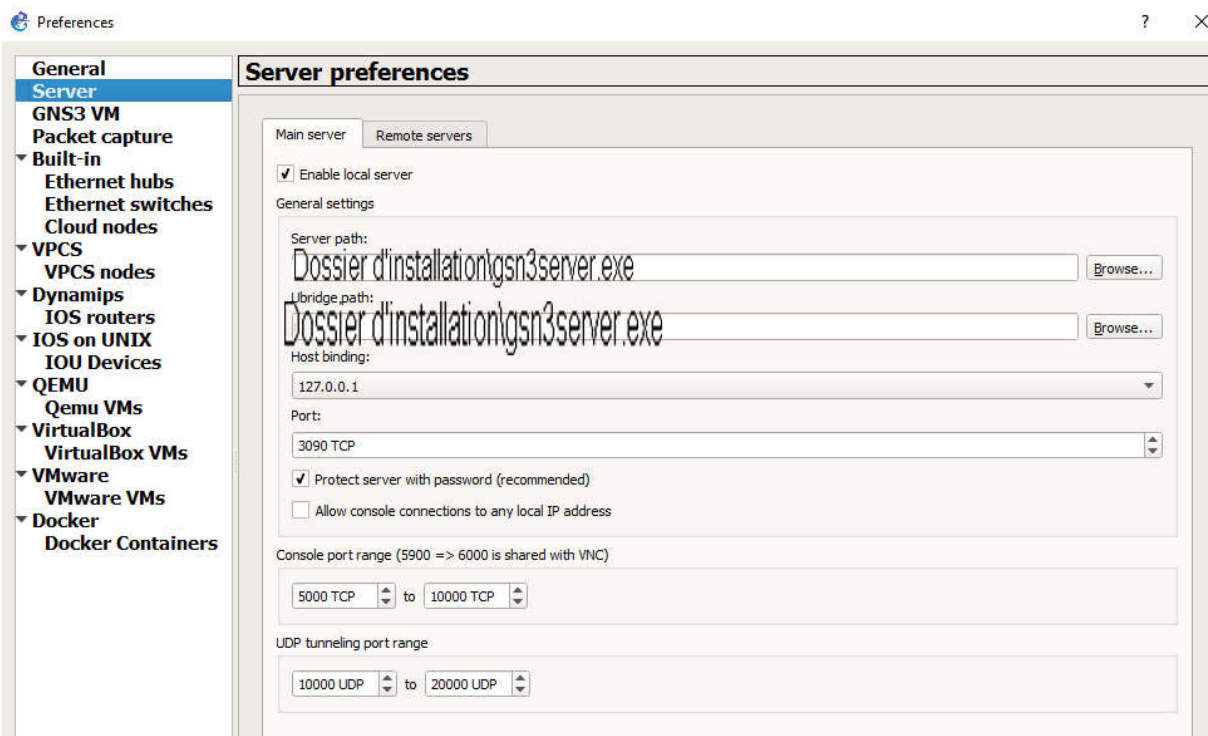
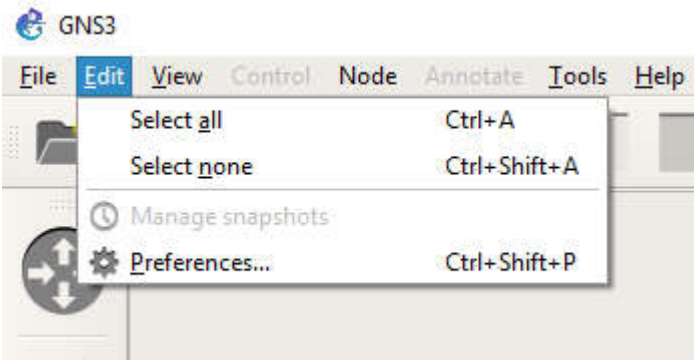
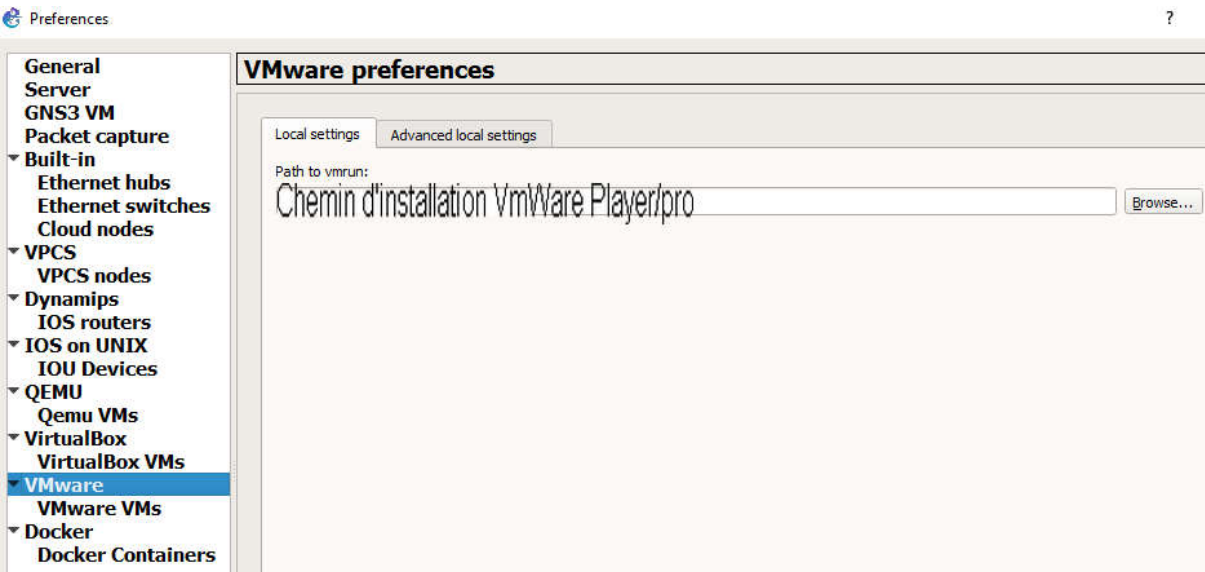
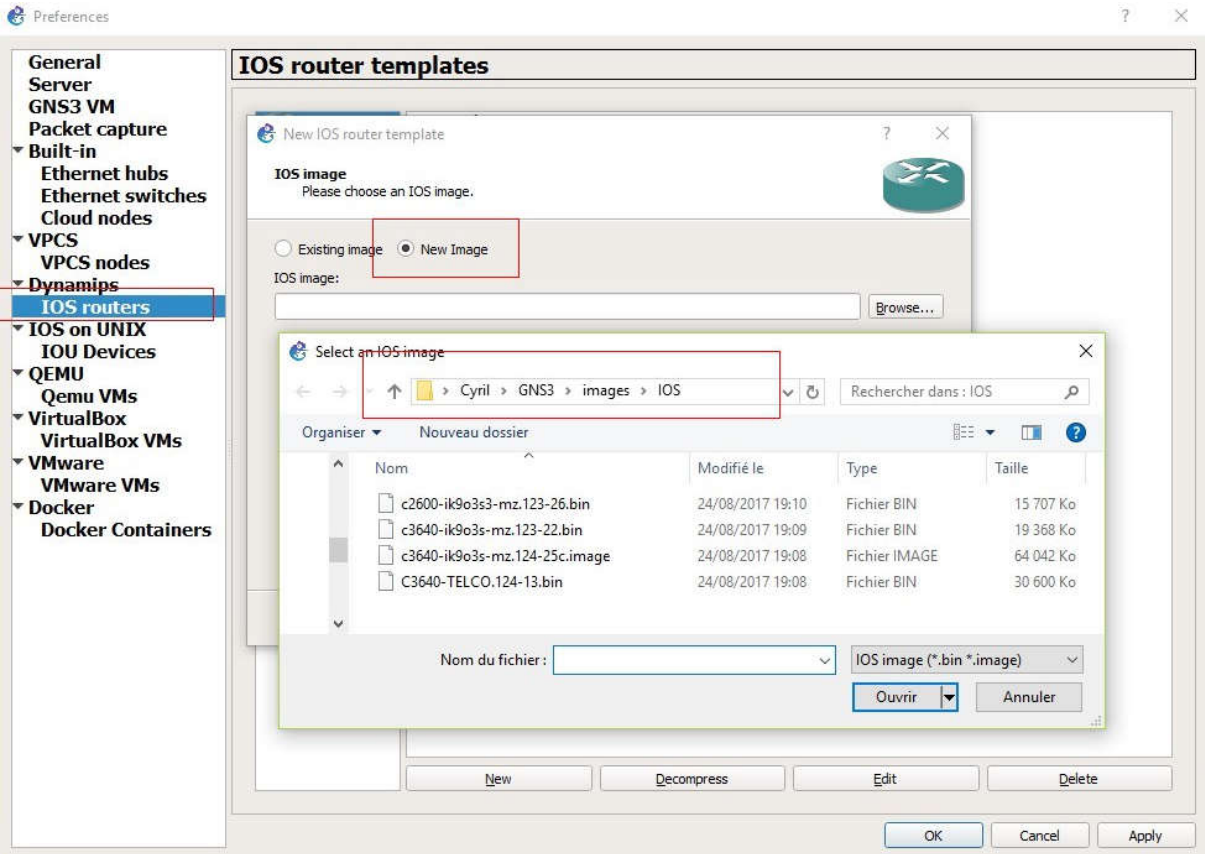


# PETITE DOC GNS3





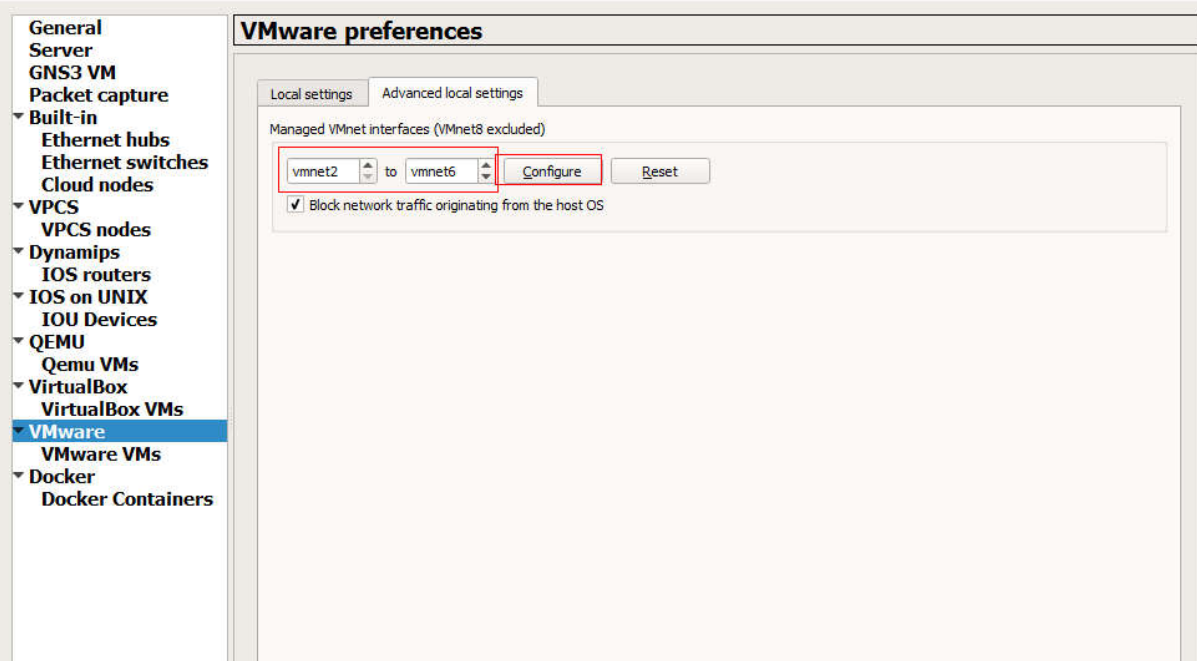
### VMware preferences

Local settings | Advanced local settings

Managed VMnet interfaces (VMnet8 excluded)

vmnet2 to vmnet6 **Configure** **Reset**

Block network traffic originating from the host OS



### VMware VM templates

test vm

**General**  
Template name: test vm  
Server: Portable  
Headless mode enabled: False

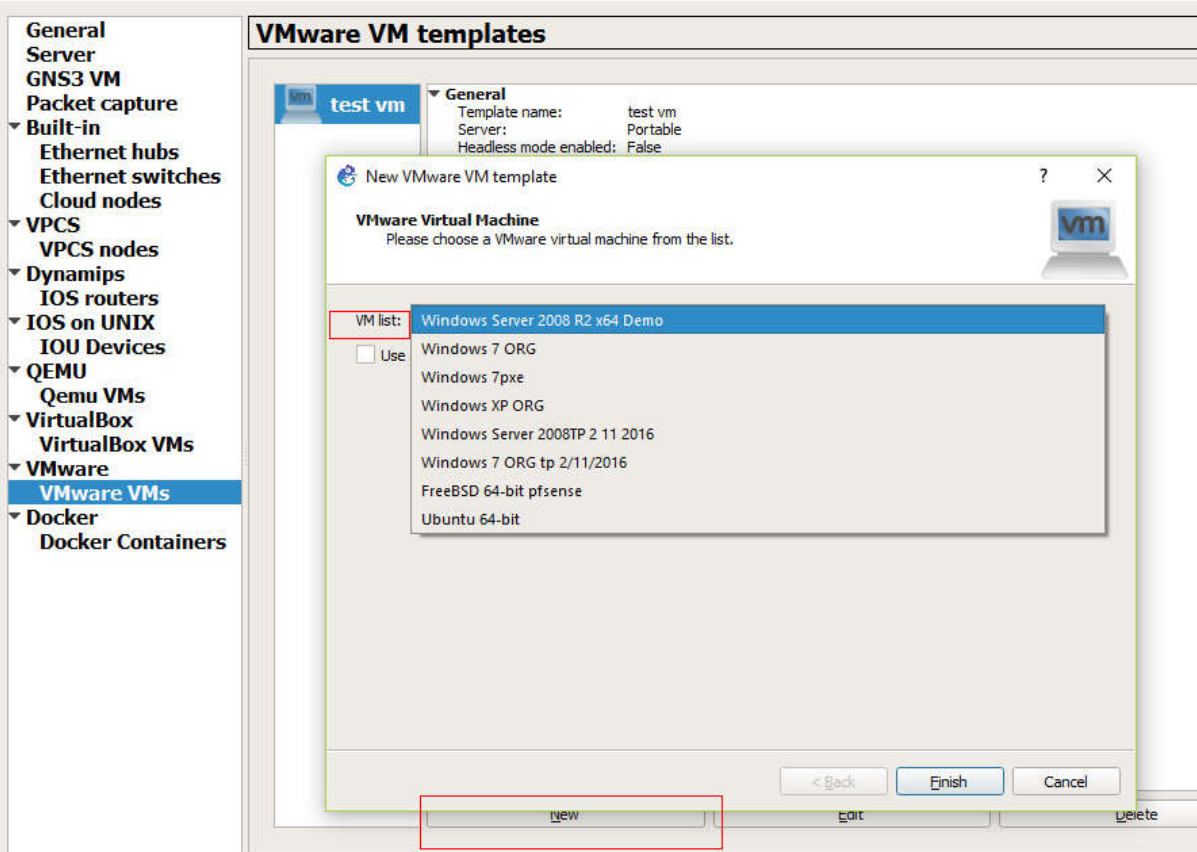
**New VMware VM template**  
Please choose a VMware virtual machine from the list.

**VM list:**

- Windows Server 2008 R2 x64 Demo
- Use
- Windows 7 ORG
- Windows 7pxe
- Windows XP ORG
- Windows Server 2008TP 2 11 2016
- Windows 7 ORG tp 2/11/2016
- FreeBSD 64-bit pfsense
- Ubuntu 64-bit

**Buttons:** < Back, Finish, Cancel

**Bottom bar:** New, Edit, Delete



## PUIS UTILISATION (Un peu à la mode Packet Tracer)

